



EDWARD ANDREWS INTERNATIONAL

"Tooling and Workholding Specialist in the Metal Cutting Industry"

STERLING HEIGHTS, MICHIGAN

ELONGATED SLOT
ALLOWS FOR "UNIVERSAL"
USE ON ALL BRANDS
OF EQUIPMENT

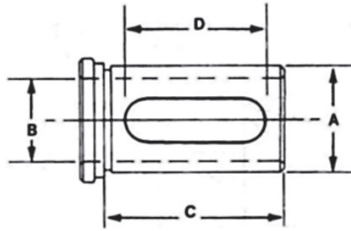


TOOL HOLDER BUSHINGS

STYLE "CS" AND "CV"

SHORT SERIES

EDWARD ANDREWS Style "CS" and "CV" Bushings are shorter versions of our "C" Style Bushing. These bushings are designed for universal use on all CNC lathes where the use of a shorter bushing is desired. The "CS" and "CV" Style Bushings can also be used with various VDI boring bar holders. The only difference between the "CV" Style Bushing and the "CS" Style is that the length of the "CV" Bushings are in METRIC SIZES to match some common tool holders.



**MADE IN THE U.S.A.
OF THRU HARDENED
ALLOY AND PRECISION
GROUND.**

STYLE "CS" INCH OD - INCH ID

ALL "CS" BUSHINGS HAVE 1 SLOT.

EA PART NUMBER	BUSHING DIA.	STANDARD BORE SIZES STOCKED*	LENGTH UNDER HEAD	LENGTH OF SLOT
	A	B	C	D
EA68-10CS	3/4	1/4, 5/16, 3/8, 1/2	1-1/2	1-1/8
EA68-11CS	1	1/4, 3/8, 1/2, 5/8, 3/4	1-3/4	1-3/8
EA68-12CS	1-1/4	3/8, 1/2, 5/8, 3/4, 7/8, 1	2-1/8	1-3/4
EA68-13CS	1-1/2	3/8, 1/2, 5/8, 3/4, 7/8, 1, 1-1/4	2-1/2	2-1/8
EA68-14CS	1-3/4	3/8, 1/2, 5/8, 3/4, 1, 1-1/4, 1-1/2	3	2-5/8
EA68-15CS	2	1/2, 5/8, 3/4, 1, 1-1/4, 1-1/2, 1-3/4	3-1/2	3-1/8

STYLE "CV" INCH OD - INCH ID

ALL "CV" BUSHINGS HAVE 1 SLOT.

EA PART NUMBER	BUSHING DIA.	STANDARD BORE SIZES STOCKED*	LENGTH UNDER HEAD	LENGTH OF SLOT
	A	B	C	D
EA68-12CV	1-1/4	1/4, 3/8, 1/2, 5/8, 3/4, 1	2.36 (60 MM)	1.97 (50 MM)
EA68-13CV	1-1/2	3/8, 1/2, 5/8, 3/4, 1, 1-1/4	2.76 (70 MM)	2.36 (60MM)

STYLE "CV" INCH OD - METRIC ID

ALL "CV" BUSHINGS HAVE 1 SLOT.

EA PART NUMBER	BUSHING DIA.	STANDARD BORE SIZES STOCKED*	LENGTH UNDER HEAD	LENGTH OF SLOT
	A	B	C	D
EA68-72CV	1-1/4	20 - 25 MM	2.36 (60 MM)	1.97 (50 MM)
EA68-73CV	1-1/2	20 - 25 - 32 MM	2.76 (70 MM)	2.36 (60MM)

* Special Sizes Available.

WHEN ORDERING BUSHINGS, SPECIFY EA PART NUMBER AND BORE SIZE REQUIRED.