

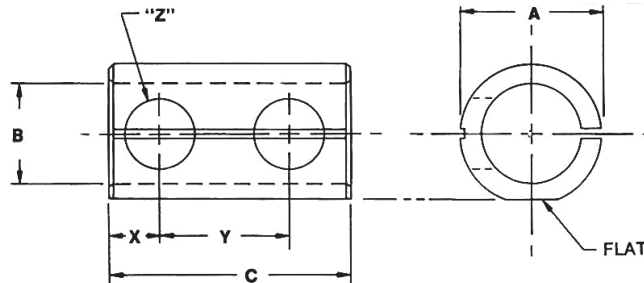
TOOL HOLDER BUSHINGS

STYLE "L"

EDWARD ANDREWS Premium Style "L" Bushings are used to adapt drills, boring bars, or shank type tools to the standard bore of the turret or tool holder on the machine.

The Style "L" Bushings are split and have a flat on the O.D. and have a single set of holes for set screws to grip directly on the flat of shank type tool holders.

MADE IN THE U.S.A. OF THRU HARDENED ALLOY AND PRECISION GROUND.



ALL "L" STYLE BUSHINGS HAVE 2 HOLES.

EA PART NUMBER	BUSHING DIA.	STANDARD BORE SIZES STOCKED*	LENGTH	LENGTH DIMENSIONS		HOLE SIZE
	A	B	C	X	Y	Z
EA68-53L	1-1/2	3/4, 1, 1-1/4	3	3/4	1-5/8	7/8
EA68-54L	1-3/4	3/4, 1, 1-1/4, 1-1/2	3	3/4	1-5/8	7/8
EA68-56L	2-1/4	3/4, 1, 1-1/4, 1-1/2, 1-3/4, 2	4-1/2	7/8	2	1
EA68-57L	2-3/4	3/4, 1, 1-1/4, 1-1/2, 1-3/4, 2, 2-1/4	4-1/2	7/8	2	1

TOOL HOLDER BUSHINGS

STYLE "K"

USED WITH SERIES 25 TAP HOLDER

These bushings are split with a milled flat on the O.D. The square shank-end of the tap drives from a slot cut through the back of this bushing.

MADE IN THE U.S.A. OF THRU HARDENED ALLOY AND PRECISION GROUND.



EA PART NUMBER	BUSHING DIA.	MINIMUM TAP	MAXIMUM TAP*	MAXIMUM PIPE	LENGTH
EA68-02K	1	#8	3/4*	1/4 PIPE	15/16
EA68-03K	1-1/2	#10	1-1/4*	1 PIPE	1-3/16
EA68-04K	1-3/4	1/4	1-3/8*	1-1/4 PIPE	1-5/16

Blank Bushings Also Available.

* Specify Regular Or Pipe Type.

WHEN ORDERING BUSHINGS, SPECIFY EA PART NUMBER AND BORE SIZE REQUIRED.