

Power Chuck

T-NUT

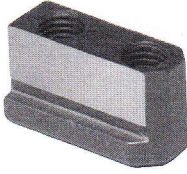


Fig 1

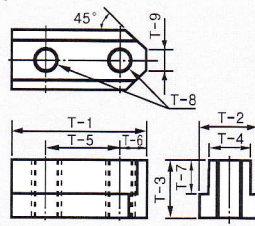


Fig 2

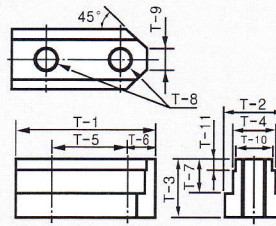
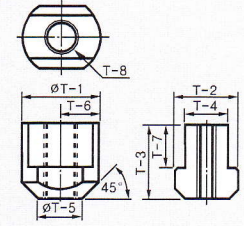


Fig 3



Dimensions

	FIG	T-1	T-2	T-3	T-4	T-5	T-6	T-7	T-8	T-9	T-10	T-11	Corresponding
TN-HCH-04	1	24.5	11.5	13.5	8	15	4.5	9	M6	5	-	-	HCH Type of 4" Chuck
TN-HS-04/05	1	26	15	15	10	14	6	9.5	M8	5	-	-	HS Type of 04", 05" Chuck
TN-HC-04	1	28	15	18	10	14	7	12.5	M8	5	-	-	HC Type of 4" Chuck
TN-HC-05	1	32	15	18	10	19	6	12.5	M8	6	-	-	HC Type of 5" Chuck
TN-HS-06	1	36	17.5	18.5	12	20	8.25	11	M10	8	-	-	HS / MH Type of 06" Chuck
TN-HCH/HC-06	1	36.5	17.5	22.5	12	20	7.5	15	M10	6	-	-	HCH / HC Type of 06" Chuck
TN-HS-08	1	46.5	20.5	20.5	14	25	10.5	12	M12	12	-	-	HS / MH Type of 08" Chuck
TN-HCH/HC-08	1	48	20.5	25.5	14	25	11	16	M12	8	-	-	HCH / HC Type of 08" Chuck
TN-HS-10	1	51	22.5	21.5	16	30	11	13	M12	11	-	-	HS / MH Type of 10" Chuck
TN-HCH/HC-10	1	55	22.5	25.5	16	30	11	16	M12	8	-	-	HCH / HC Type of 10" Chuck
TN-HS-12	1	55.5	29.5	27.75	21	30	12	16.25	M16	13	-	-	HS / MH Type of 12" Chuck
TN-HCH/HC-12	1	55.5	26.5	33.5	18	30	11.5	20	M14	12	-	-	HCH / HC Type of 12" Chuck
TN-HCH-15/18	2	80	33.5	45.5	24	43	17	29	M20	11	22	7.5	HCH Type of 15", 18" Chuck
TN-HC-15/18	1	80	35	39	25.5	43	17	20	M20	11	-	-	HC Type of 15", 18" Chuck
TN-MH-218	2	80	33.5	45.5	24	50	17	29	M20	16	-	-	MH-218
TN-HCH-21/24	1	100	37.5	45	25	60	20	26	M20	11	22	7.5	HCH / HCHF-21, 24 (S), MH-221(S)
TNX-HC-21/24	3	46	37.5	45	25	26.5	23	26	M20	-	-	-	HC / HCF-21, 24, HCH / HCHF-21, 24 (H), MH-221(H)
TN-HCH-32	3	35	35	39.5	25.5	25	-	20.5	M20	-	-	-	HCH-32
TN-HC-32	3	37	37.5	47.5	25.5	-	-	28.5	M20	-	-	-	HC-32
TN-HC-40	3	42	42.5	49.5	30	-	-	30.5	M24	-	-	-	HC-40

※TNX-HC-21-24 require two T-nuts per jaw.