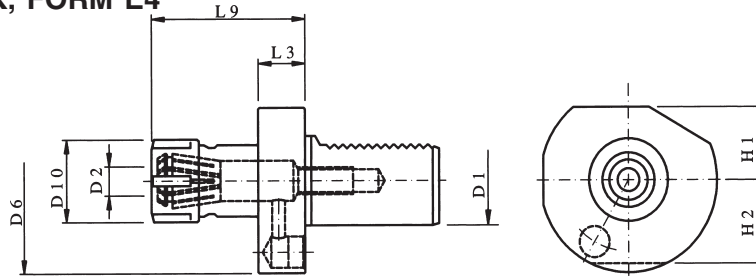




VDI

## COLLET CHUCK, FORM E4 ER / SCHAUBLIN



EA PART NUMBER	D1	D2	DIN-DESIGNATION	D6	D10 MAX.	H1	H2	L3	L9 MAX.	COLLETS
E220.000.150	16	0.5-10	E4-16x16	40	28	18	18	14	45.5	ER 16
E220.000.220	16	1-13	E4-16x20	40	34	18	18	14	44	ER 20
E221.040.090	20	1-16	E4-20x25	50	42	23	23	18	57	ER 25
E221.035.220	20	2-20	E4-20x32	50	50	23	23	18	62	ER 32
E227.040.090	25	1-16	E4-25x25	58	42	25	25	18	57	ER 25
E227.035.220	25	2-20	E4-25x32	58	50	25	25	18	62	ER 32
E222.040.090	30	1-16	E4-30x25	68	42	28	30	22	57	ER 25
E222.035.220	30	2-20	E4-30x32	68	50	28	30	22	75	ER 32
E223.040.090	40	1-16	E4-40x25	83	42	32.5	----	22	63	ER 25
E223.035.220	40	2-20	E4-40x32	83	50	32.5	----	22	75	ER 32
E223.045.220	40	3-26	E4-40x40	83	63	32.5	----	22	75	ER 40
E224.035.220	50	2-20	E4-50x32	94	50	35	----	30	75	ER 32
E224.045.220	50	3-26	E4-50x40	94	63	35	----	30	63	ER 40
E225.045.220	60	3-26	E4-60x40	123	63	42.5	----	30	75	ER 40

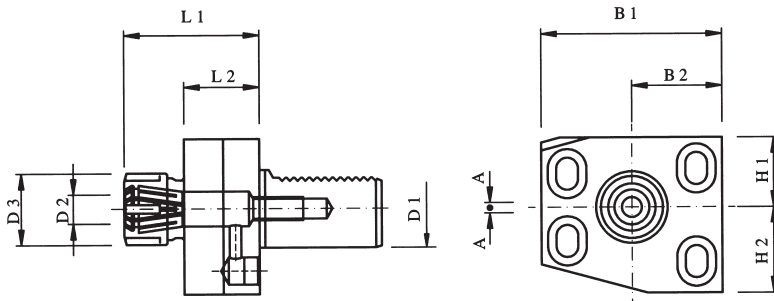
Coolant supply thru collet.

Purchase sealed collet separately for tool requiring thru coolant.

## COLLET CHUCK

ER/Schaublin

with height adjustment facility



EA PART NUMBER	D1	D2	DIN-DESIGNATION	D3	H1	H2	B1	B2	L1	L2	A	COLLETS
*E231.110.090	20	1-16	----	42	24	29	55	30	70	----	2	ER 25
*E237.110.090	25	1-16	----	42	24	29	55	30	70	----	2	ER 25
E232.110.090	30	1-16	----	42	27	31	35	35	56	30	2	ER 25
*E233.110.090	40	2-20	----	50	31	47	85	42.5	80	----	2	ER 32

Coolant supply thru collet.

Purchase sealed collet separately for tool requiring thru coolant

\* Drawing not correspondent with tool.